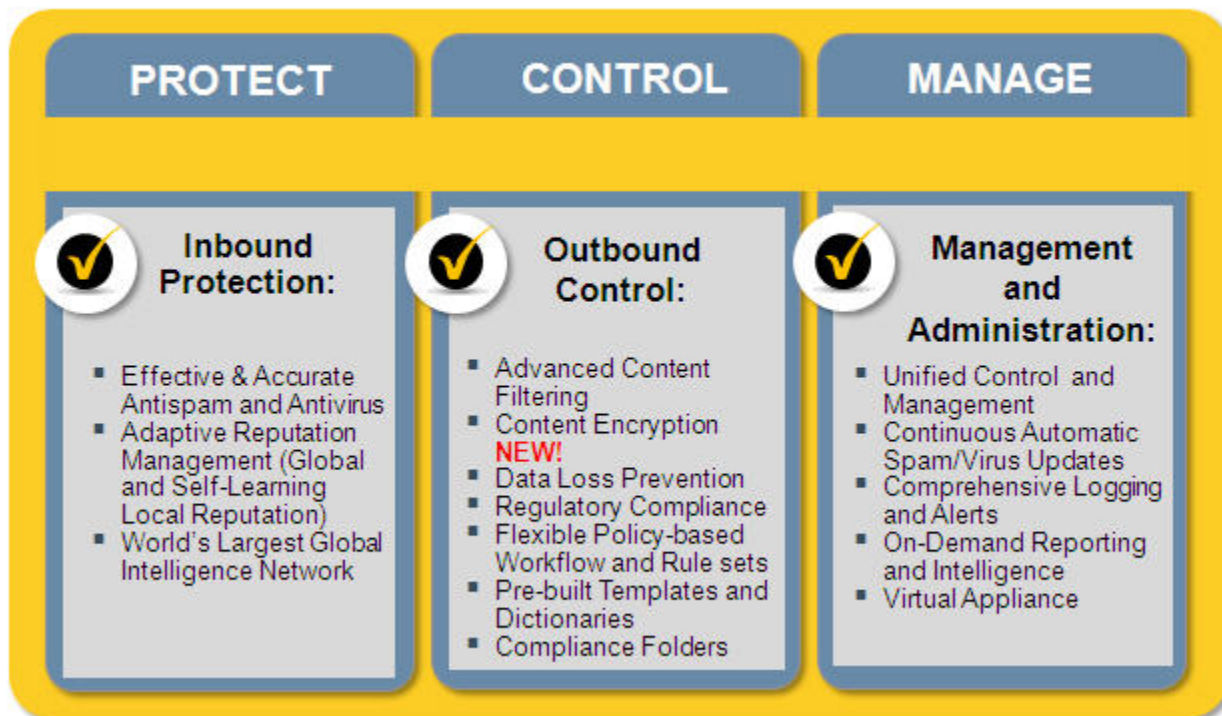


# Symantec Brightmail™ Gateway

Real-time protection backed by the largest investment in security infrastructure



## Overview

Symantec Brightmail™ Gateway delivers inbound and outbound messaging security, with effective and accurate real-time antispam and antivirus protection, advanced content filtering, data loss prevention, and email encryption. Brightmail Gateway is simple to administer and catches more than 99% of spam with less than one in a million false positives. With Brightmail Gateway, organizations can effectively respond to new messaging threats, minimizing network downtime, preserving employee productivity, and protecting company reputation. The product leverages real-time automatic antispam and antivirus updates from the Symantec™ Global Intelligence Network, on-box connection throttling using both global and self-learning local IP reputation, and powerful on-demand reporting, unified administrative controls, and flexible work flow, simplify management and drive down administrative costs. Advanced content filtering, data loss prevention, and email encryption help organizations control sensitive data, reduce the risks associated with data loss, and meet regulatory compliance and corporate governance demands.

Brightmail Gateway is available as both a physical appliance and a VMware-certified virtual appliance, enabling organizations to easily add or remove antispam capacity to keep messages flowing in the face of growing, unpredictable spam volume. It is part of Symantec™ Protection Suite Enterprise Edition, an endpoint, messaging and backup security suite that protects against complex data loss, malware, and spam threats from desktop to gateway and ensures data is backed up—controlling costs and managing risk.

### **Antispam and antivirus protection helps ensure uptime and productivity**

The Brightmail Antispam™ engine is based on over 10 years of experience fighting spam. Unlike many other engines, Brightmail employs over 20 different antispam technologies. Brightmail Gateway delivers greater than 99 percent effectiveness and a critical false positive rate of less than one in a million, making it one of the industry's most accurate solutions<sup>1</sup>. Brightmail Gateway delivers real-time protection from new attacks with real-time automatic antispam updates, leveraging the Global Intelligence Network which includes:

- Over 120 million antivirus sensors
- Over 40,000 firewall and intrusion detection sensors
- Managed security deployments in 70 countries
- Symantec's patented Probe Network of over 2.5 million decoy accounts

Symantec protects more than 800 million mailboxes from viruses and spam. Brightmail Adaptive Reputation Management delivers on-box connection throttling, combining both global and self-learning local IP reputation analysis with intelligence resource allocation to improve spam filtering by blocking malicious senders at the network level. By reducing spam volume and keeping email secure, Brightmail Gateway protects messaging infrastructure and helps ensure business uptime and user productivity.

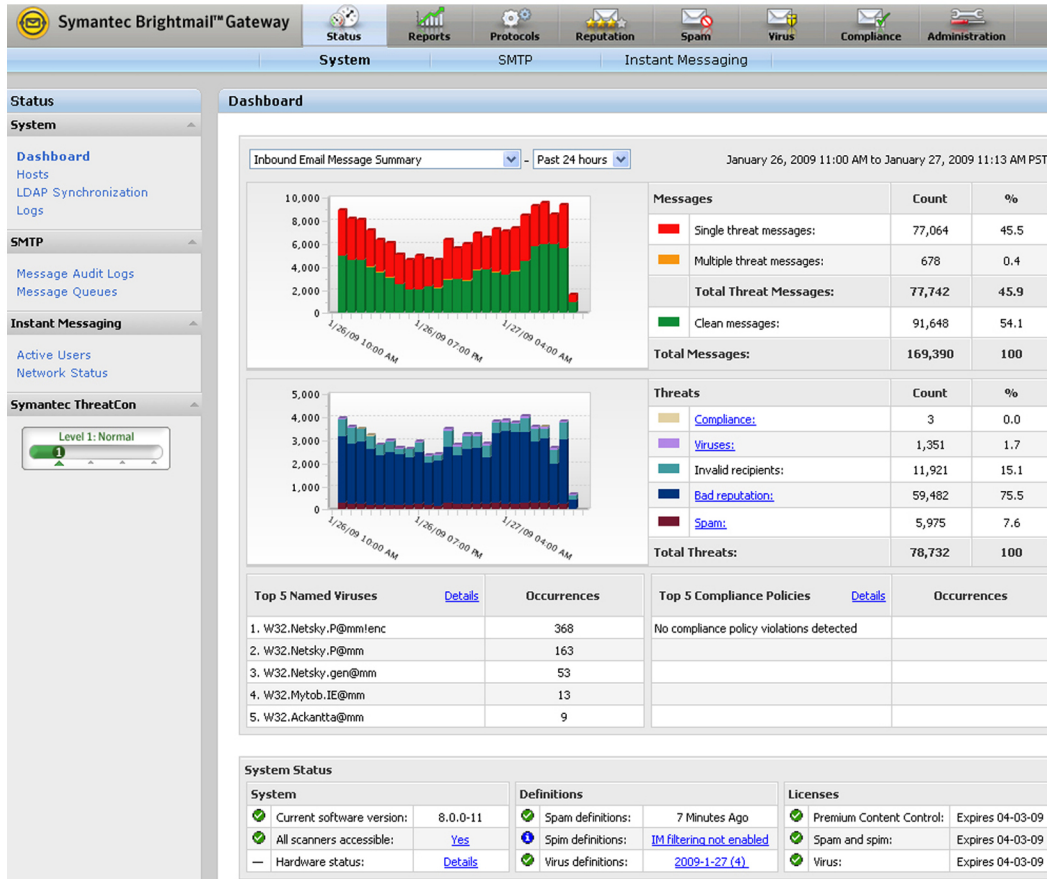
Brightmail Gateway offers unparalleled antivirus protection as demonstrated over 40 consecutive VB100 effectiveness ratings, since November 1999, and includes zero-day antivirus protection, reducing the risk of downtime by proactively detecting and quarantining suspicious messages before definitions become available.

Brightmail Gateway integrates IM protection against viruses and spim (IM-based spam), including the industry's first zero-day threat protection from IM-borne viruses and worms.

### **Outbound control of sensitive data flow helps enforce regulations and protect company reputation**

Brightmail Gateway features advanced content filtering and data loss prevention technologies that make it easier to protect and control sensitive data. Administrators can easily build effective and flexible policies that enforce regulatory compliance and protect against data loss. Incident management, keyword and regular expression scanning inside messages and attachments, and true file typing help administrators gain control over messaging content and comply with regulations. Pre-built templates and dictionaries allow customers to easily deploy policies that manage risks associated with data loss, internal governance, and compliance with specific regulations. Brightmail Gateway appliances leverage integration with sophisticated structured data matching technology from Symantec™ Data Loss Prevention, which analyzes data held in databases (e.g., customer and patient records, banking information, order processing, CRM, etc.) and creates unique fingerprints for the actual data. Administrators can create policies that enforce encryption or "Hold for Review" before allowing their delivery, providing an opportunity for administrative intervention by compliance or legal staff if needed. These and other easy-to-configure, integrated workflow tools enable the creation of policies to control data and respond to policy violations — while the use of email encryption allows business to continue uninterrupted.

<sup>1</sup>. InfoWorld Technology of the Year Award, 2005-2008, winner for Best Anti-Spam/Mail Security Solution.



### Symantec Content Encryption – premium subscription

Email is the most common form of business communication used today. More and more companies are quickly realizing the need for encrypted email as a result of federal and state regulations that require private information be encrypted. However, the protection of sensitive information needs to be balanced with the transparent flow of business information. Sophisticated content filtering can prevent sensitive information from leaving an organization, but what if that information is necessary for business? Combining the content filtering and data loss prevention capabilities of Brightmail Gateway with Symantec Content Encryption, a premium add-on, allows secure, transparent email exchange while maintaining regulatory compliance.

The laws and regulations are clear, sensitive content in email must be encrypted. No matter what industry you are in, there are laws and regulations that affect how you handle sensitive information. Yet, email is the primary means by which most employees exchange information. Symantec Content Encryption, in combination with Brightmail Gateway, protects you from stiff fines and costly data breaches while allowing your business to continue to grow.

### Unified management and administration reduces cost and complexity

Brightmail Gateway includes a powerful control center for unified management and administration of an organization's messaging infrastructure. From a single Web-based console, administrators can easily manage multiple Brightmail Gateway appliances to view trends, attack statistics, and noncompliance incidents. By removing the complexity of multiple consoles, disparate policies, and incompatible logging and reporting procedures, Brightmail Gateway significantly reduces the total cost of ownership (TCO) of messaging security infrastructure. Brightmail Gateway supports a full set of reporting options, including a dashboard and executive summaries that highlight system efficacy and impact. Reporting helps administrators proactively

identify data loss trends and demonstrate compliance. The management console includes more than 50 preset reports that can be customized by content or time, scheduled for automatic report generation, and exported. Simplified message tracking through a graphical message-auditing interface gives administrators the ability to quickly determine message disposition. Brightmail Gateway requires very little configuration out of the box, facilitating easy and fast initial deployment. Spam signatures and virus definitions are automatically updated in real-time, leveraging the powerful Global Intelligence Network to simplify management and help ensure the benefits of the latest threat detection across the enterprise.

### **Key benefits**

Brightmail Gateway offers organizations substantial and measurable advantages.

#### **Effective and accurate antispam protection:**

- Provides greater than 99% effectiveness in antispam protection with less than one in a million false positives and real-time automatic updates.
- Protects messaging infrastructure and helps ensure business uptime and user productivity by reducing spam volume and keeping email secure.

#### **Reliable antivirus protection:**

- Provides reliable and effective antivirus protection, including zero-day protection, with over 40 VB100 awards since November 1999.
- Protects messaging infrastructure and helps ensure business uptime and user productivity by eliminating malware threats.

#### **Advanced content filtering and data loss prevention:**

- Protects sensitive client data and valuable confidential information, with the ability to fingerprint and identify actual company data within messages or attachments.
- Protects company reputation and manages risks associated with data loss, internal governance, and regulatory compliance.
- Optional Symantec Content Encryption subscription integrates email encryption into Brightmail Gateway console, leveraging powerful built-in content filtering and data loss prevention policies.

#### **Comprehensive reporting:**

- Includes a dashboard, summary reports, and detailed reports demonstrating the efficacy and impact of Brightmail Gateway while proactively highlighting threat trends and potential compliance issues.
- Reduces administrative costs by removing the complexity of multiple consoles, disparate policies, and incompatible logging and reporting, while demonstrating efficacy and impact of messaging security.

#### **Real-time updates leveraging Global Intelligence Network:**

- Provides continuous updates to spam and virus protection based on global intelligence derived from over 800 million protected mailboxes, 120 million antivirus sensors, and over 5 million accounts in patented Probe Network.
- Provides effective, real-time protection against new and emerging threats before they cause disruptions.

**Flexible deployment options:**

- Powerful, cost-effective, easy-to-use Symantec Brightmail™ Appliance 8300 series hardware appliances simplify deployments while scaling to the most demanding enterprise environments.
- Flexible, configurable, easy-to-use Brightmail Gateway Virtual Edition runs in VMware hypervisor in the hardware environment of a customer’s choice.

**System requirements**

**Supported platforms**

Brightmail Gateway can be deployed on a family of Brightmail/Mail Security 8300 Series hardware appliances that can scale across organizations from small businesses to large enterprises. There is also a virtual appliance option, the Brightmail Gateway Virtual Edition, which offers the same software, features, and functionality, deployed on VMware® environments. Appliances can be deployed as dedicated control centers, scanners, or combined control center/scanners.

Appliance Model	8340	8360	8380
Organization	SMB (Up to 1,000 users)	Enterprise / Large Enterprise	Enterprise / Large Enterprise
Typical Deployment*	Control Center / Scanner	Dedicated Scanner or Control Center	Dedicated Control Center
Form Factor	1RU Rack Mount	1RU Rack Mount	2RU Rack Mount
Power Supply	Single	Redundant, hot-plug, auto-switching, universal power supply	Redundant, hot-plug, auto-switching, universal power supply
CPU	Single Multi-Core Processor	Dual Multi-Core Processors	Dual Multi-Core Processors
Hard Drive / RAID	2 x 160GB Serial ATA RAID 1	2 x 146GB Serial-Attach SCSI (hot-swappable) RAID 1	6 x 300GB Serial-Attach SCSI (hot-swappable) RAID 10
NIC	Two Gigabit Ethernet Ports	Two Gigabit Ethernet Ports	Three Gigabit Ethernet Ports
* Customers may deploy any appliance model as a combined control center / scanner, dedicated scanner, or dedicated control center			

**Appliance Platforms**

- Symantec Brightmail 8300 Series appliances
- Symantec Mail Security 8300 Series appliances

**Virtual Hypervisors (Virtual Edition)**

- VMware ESX 3.5 (rev 4 or later)
- VMware vSphere 4.0
- VMware ESXi 3.5 (rev 3 or later), ESXi 4.0

### Browser Requirements (Administrative Console)

- Microsoft Internet Explorer 6.0, 7.0, 8.0
- Firefox 3.0, 3.5



---

### More information

#### *Visit our website*

<http://www.symantec.com/business/brightmail-gateway>

#### *To speak with a Product Specialist in the U.S.*

Call toll-free 1 (800) 745 6054

#### *To speak with a Product Specialist outside the U.S.*

For specific country offices and contact numbers, please visit our website.

#### *About Symantec*

Symantec is a global leader in providing security, storage and systems management solutions to help consumers and organizations secure and manage their information-driven world. Our software and services protect against more risks at more points, more completely and efficiently, enabling confidence wherever information is used or stored.

#### *Symantec World Headquarters*

350 Ellis St.  
Mountain View, CA 94043 USA  
+1 (650) 527 8000  
1 (800) 721 3934  
[www.symantec.com](http://www.symantec.com)