

Control Compliance Suite Vulnerability Manager

Intelligently Identify and Prioritize the Remediation of System Vulnerabilities



Data Sheet

Most vulnerability management solutions do little to help security leaders put vulnerability and risk information in the context of business. Saddled with volumes of rigid data and static reports, the security team is left to manually discern real threats and determine how to act upon them. At Symantec, we believe that security professionals deserve more from their vulnerability management solutions. That's why we deliver vulnerability data in the proper context.

Control Compliance Suite Vulnerability Manager: The Context-Aware Vulnerability Management Solution

Symantec® Control Compliance Suite Vulnerability Manager (CCSVM) is the only vulnerability management solution designed from the ground up to provide organizations with context-aware vulnerability assessment and risk analysis. Its results-driven architecture works with users to proactively identify security exposures, analyze business impact, and plan and conduct remediation across network, web, mobile, cloud, virtual, and IoT infrastructure.

- Discover network, web, mobile, cloud, virtual, and IoT infrastructure.
- Profile asset configuration and risk potential.
- Pinpoint vulnerabilities, malware and attacks.
- Analyze threat potential, return on remediation and more.
- Isolate high-risk assets through advanced threat analytics.
- Trigger remediation through integration with 3rd party systems
- Report on vulnerabilities, compliance, benchmarks, etc.
- Protect endpoints against client-side attacks.

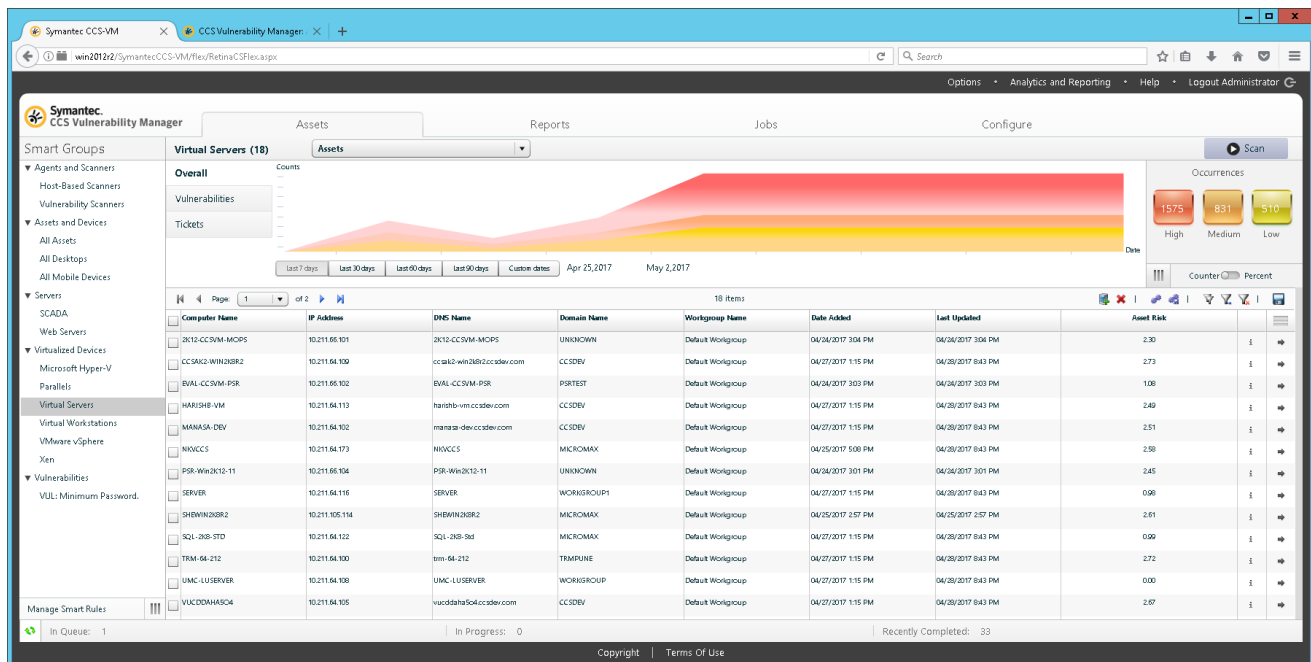


Figure 1. CCSVM enables you to understand and prioritize risk in the context of your business via the centralized Control Compliance Suite management, reporting and analytics console.



Control Compliance Suite Vulnerability Manager

Intelligently Identify and Prioritize the Remediation of System Vulnerabilities



Data Sheet

Key Capabilities

ZERO-GAP COVERAGE

Able to discover and assess any IT resource, CCSVM offers zero-gap coverage of the largest, most diverse IT environments. Agentless and agent-based scanning protects both online and offline assets.

UNMATCHED REPORTING

With the most powerful reporting capabilities in its class, CCSVM makes it easy to make smarter decisions, communicate risk, and report remediation progress to executives and compliance auditors.

ADVANCED THREAT ANALYTICS

CCSVM discovers data breach threats typically missed by other vulnerability solutions. The solution pinpoints specific, high-risk users and assets by correlating vulnerability and threat data from a variety of Symantec and third-party solutions.

EXTENSIVE COMPLIANCE COVERAGE

Reporting for COBIT, GLBA, HIPAA, HITRUST, ISO, ITIL, NERC-FERC, NIST, PCI, SOX, and many more government & industry regulations.

ENTERPRISE SCALABILITY AND FLEXIBILITY

CCSVM's multi-tier architecture is designed for simple deployment and management of networks with multiple firewalls, IDS/IPS, VLANS and disparate locations.

Control Compliance Suite Vulnerability Manager Threat and Vulnerability Intelligence

CCSVM provides centralized management, policy, reporting, and analytics for vulnerability management solutions. Capabilities include:

- Centralized solution management and control via common dashboards
- Asset discovery, profiling and grouping
- Reporting and analytics
- Workflow and ticketing

UNMATCHED REPORTING & ANALYTICS

- Results-Driven Architecture
Tailor scans to specific reporting and compliance requirements.
- Advanced Threat Analytics
Detect critical threats thru volumes of data.



Control Compliance Suite Vulnerability Manager

Intelligently Identify and Prioritize the Remediation of System Vulnerabilities



Data Sheet

- **Resource Planning**
Run what-if scenarios and team capacity analyses to plan resource allocation.
- **100+ Actionable Reports**
Communicate with technical and non-technical audiences.
- **Compliance Reporting**
COBIT, GLBA, HIPAA, HITRUST, ISO-27002, ITIL, MASS 201, NERC-FERC, NIST, PCI, SOX and more.
- **Advanced Threat Intelligence**
Based on asset scoring, security research, exploit databases, exploitability, NSRL, CVSS v3, CWE, and more.
- **Trends, Deltas and Heat Maps**
Share progress with executives, compliance auditors and others.
- **SLA Compliance Reports**
Measure threat severity level against dynamic asset groupings.
- **Pivot Grid Ad-Hoc Reporting**
Create custom reports.
- **Third-Party Integration**
SIEM, GRC, NMS and help desk integration

MAXIMUM FLEXIBILITY

- **Flexible Deployment**
Deploy software, appliances and/or virtual machines.
- **Centralized Dashboards**
Consolidate enterprise-wide activities.
- **Integrated Data Warehouse**
Analyze historical data over time.
- **Role-Based Access**
Provide permissioned access to view, assess and report on data.
- **Effortless Updates and Upgrades**
Expand capabilities via license updates.

Control Compliance Suite Vulnerability Manager

Intelligently Identify and Prioritize the Remediation of System Vulnerabilities



Data Sheet

ZERO-GAP COVERAGE

- **Vulnerability Assessment**
Flag vulnerabilities, attacks, and malware by asset for a complete view of risk.
- **Comprehensive Discovery**
Locate network (local and remote), web, mobile, cloud, virtual and IoT assets.
- **Asset Profiling**
Gather information including IP, DNS, OS, MAC address, ports, services, software, processes, hardware, event logs and more.
- **Asset Smart Groups**
Group, assess, and report on assets by IP range, naming convention, OS, domain, applications, business function and more.
- **Asset Context Awareness**
Evaluate risk based on damage potential or target distribution, plus confidentiality, integrity and availability requirements.
- **Smart Credentials**
Automatically scan targets using the highest privilege level.
- **Asset Risk Analysis**
Compare asset risk levels with custom Threat Risk and Exposure Risk scoring.
- **Cloud Scanning**
Scan online & offline Amazon®, GoGrid®, Google®, IBM®, Rackspace® & VMware®.
- **VMware Verified**
Scan virtual environments requiring PCI and HIPAA compliance.
- **Patch Management**
Remediate with patch management using ticketing tools and integrations for Microsoft and third-party applications.
- **Scheduling and Alerts**
Schedule scans and configure email alerts.

Control Compliance Suite Vulnerability Manager

Intelligently Identify and Prioritize the Remediation of System Vulnerabilities



Data Sheet

ENTERPRISE SCALABILITY

- N-Tier, Multitenant Architecture
Gain maximum scalability and control.
- Scan Engine Pooling
Combine scan engines, each able to scan a Class-A network in under 15 minutes.
- Retina Protection Agent
Local scanning, zero-day monitoring, and intrusion prevention for offline devices.
- Local and Remote Scanning
Cover segregated, firewalled and disparate infrastructure.

Control Compliance Suite Vulnerability Manager

Intelligently Identify and Prioritize the Remediation of System Vulnerabilities



Data Sheet

More Information

Visit our website

<http://go.symantec.com/ccs>

To speak with a Product Specialist in the U.S.

Call toll-free 1 (800) 745 6054

To speak with a Product Specialist outside the U.S.

For specific country offices and contact numbers, please visit our website.

About Symantec

Symantec Corporation (NASDAQ: SYMC), the world's leading cyber security company, helps organizations, governments and people secure their most important data wherever it lives. Organizations across the world look to Symantec for strategic, integrated solutions to defend against sophisticated attacks across endpoints, cloud and infrastructure. Likewise, a global community of more than 50 million people and families rely on Symantec's Norton and LifeLock product suites to protect their digital lives at home and across their devices. Symantec operates one of the world's largest civilian cyber intelligence networks, allowing it to see and protect against the most advanced threats. For additional information, please visit www.symantec.com or connect with us on [Facebook](#), [Twitter](#), and [LinkedIn](#).

Symantec World Headquarters

350 Ellis St.

Mountain View, CA 94043 USA

+1 (650) 527 8000

1 (800) 721 3934

www.symantec.com