

# Symantec Ghost™ Solution Suite

Accelerate and simplify imaging and deployment

## Overview

Symantec Ghost™ Solution Suite is an industry leading and award-winning solution for deploying and managing desktops, laptops, tablets, and servers. From a single management console, you can quickly and easily migrate to the latest operating systems, inventory machines, deploy software, and perform custom configurations across multiple hardware platforms and OS types including Windows, Mac, and Linux.

## What's New in Ghost Solution Suite 3.3?

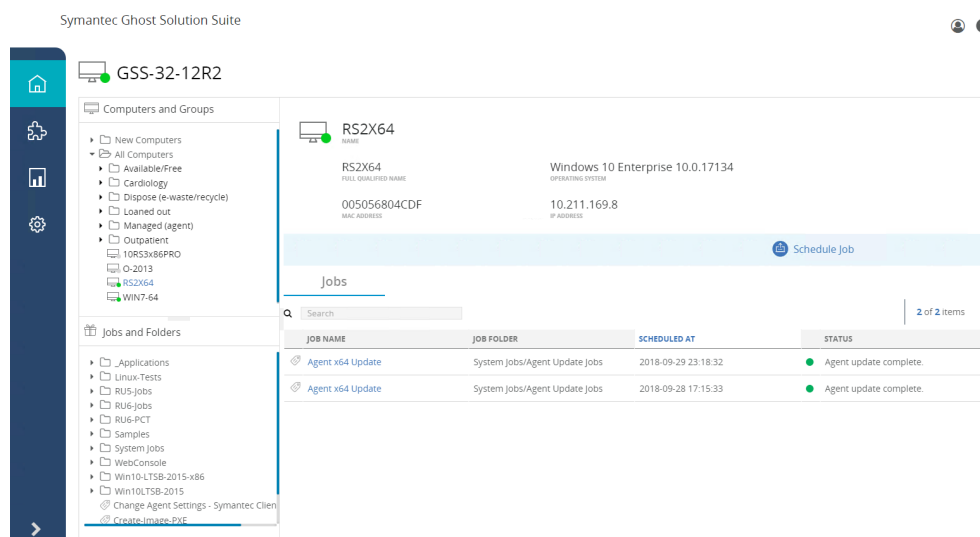
Ghost Solution Suite 3.3 introduces several new compelling features and enhancements including:

- Modern Web Console
- Guided Wizards
- Faster Imaging

Let's look at each of these in more detail.

## Modern Web Console

Ghost Solution Suite 3.3 has a new web-based console designed specifically for technicians with minimal experience. It complements the full console and is simple to use with built-in wizards for common tasks such as Windows 10 migration and deploying images. It has a modern UI and works with any browser. With the web console, frequently run jobs can be delegated to frontline technicians to optimize resources and reduce costs. The web console is also highly scalable, so a large number of technicians can use it simultaneously.



Ghost Solution Suite 3.3 Web Console

# Guided Wizards

The new web console includes guided wizards to shorten the imaging learning curve for inexperienced admins. Ghost Solution Suite 3.3 has wizards to create jobs for an in-place upgrade to Windows 10, and to deploy and configure images. Additional wizards are planned for upcoming releases. Using the wizards takes what can be complex processes and changes them into simple step-by-step flows that will make even the newest admin feel like a pro.

## Faster Imaging

A significant part of the time required for imaging machines is booting into automation. The longer a machine takes to get into automation, the longer the overall imaging process takes. Ghost Solution Suite 3.3 now supports iPXE which delivers a dramatic speed improvement to the pre-boot automation process. iPXE shortens the overall downtime during deployment activities and therefore gets the end user back to productivity quicker.

## Key features of Ghost Solution Suite

In addition to these exciting new features already covered, Ghost Solution Suite continues to offer and innovate across its core capabilities that have made it one of the leading solutions in the market for many years.

- Best-of-breed disk image capture and deployment
- Scripted operating system installation
- Industry leading imaging engine
- PC user and application settings migration
- Intelligent driver to device mapping
- Remote task execution and sequencing
- Bare-metal deployment
- Windows, Mac, and Linux support
- Tablet support (selected models)
- Powerful automation environment options

## More Information

Visit our website:

[www.ghost.com](http://www.ghost.com)

**To speak with a Product Specialist in the U.S.**

Call toll-free 1 (800) 745 6054

**To speak with a Product Specialist outside the U.S.**

For specific country offices and contact numbers, please visit our [website](#).



### About Symantec

Symantec Corporation (NASDAQ: SYMC), the world's leading cyber security company, helps organizations, governments and people secure their most important data wherever it lives. Organizations across the world look to Symantec for strategic, integrated solutions to defend against sophisticated attacks across endpoints, cloud and infrastructure. Likewise, a global community of more than 50 million people and families rely on Symantec's Norton and LifeLock product suites to protect their digital lives at home and across their devices. Symantec operates one of the world's largest civilian cyber intelligence networks, allowing it to see and protect against the most advanced threats. For additional information, please visit [www.symantec.com](http://www.symantec.com) or connect with us on [Facebook](#), [Twitter](#), and [LinkedIn](#).



350 Ellis St., Mountain View, CA 94043 USA | +1 (650) 527 8000 | 1 (800) 721 3934 | [www.symantec.com](http://www.symantec.com)