

Achieve ISO 27001 Compliance with Symantec Control Compliance Suite

The benefits of implementing ISO 27001 include using the framework's best practices to secure key data including financial information, intellectual property, employee details, and more. Many organizations adopt ISO 27001 to protect against data breaches or to reassure customers they're following the ISO security recommendations.

By relying on Symantec Control Compliance Suite for ISO risk-prioritized security and compliance, you'll understand where you do (and don't) comply with the ISO framework. With that information, you can identify gaps in your security posture and quickly create reports to assure your executive board that you're ISO 27001 compliant.

Why It's Tough to Get a Complete Picture of Your Compliance

Addressing the challenges associated with being ISO compliant are critical in order to demonstrate your organization truly is complying with the framework. Many organizations struggle with these common challenges:

Challenge #1: Gathering both technical and procedural control data.

One of the greatest challenges in becoming ISO compliant is demonstrating compliance – proving that you're actually satisfying ISO's many requirements and having the data to back it up when auditors visit. This type of information needs to be collected for both ISO's technical and procedural controls. Many compliance solutions just address one type of control but not both. This

limitation creates more manual work as you'll need to gather the missing data and makes it much harder to understand if there are gaps in your security and compliance status.

Challenge #2: Assessing and reporting on status of third-party security data.

Most organizations use multiple third-party technologies to support their security posture. These third-party systems also need to be included in your ISO assessments to ensure they have the proper security configurations, but it can be difficult and time-consuming to gather this data without an automated solution.

Challenge #3: Preparing for audits is time-consuming.

Having the proper information ready when an auditor visits is crucial – especially if a surprise audit occurs. If you can't quickly run reports to give the auditor the information they need, your team will spend enormous amounts of time chasing data, massaging it, and formatting reports. You'll also want the ability to assess your ISO compliance posture at regular intervals so you can identify security gaps and address them before the next audit.

How Control Compliance Suite Helps You Attain ISO Compliance

A software solution alone can't make you compliant – it's your processes and properly secured assets that help ensure ISO compliance. But using a solution like Symantec Control Compliance Suite can make attaining and maintaining compliance a much easier and faster process.



Symantec Control Compliance Suite combines both procedural and technical information to help achieve ISO security and compliance including:

- Supporting end-to-end automation of internal and external assessments of procedural and technical controls against native and third-party data sources.
- Generating audit-ready reports and dashboards
- Calculating and aggregating risk scores according to your business' unique thresholds.

End-to-end automation for technical and procedural controls

Proving ISO compliance requires collecting and maintaining an enormous amount of data about the controls in your environment. Control Compliance Suite automates assessment of technical controls through a combination of asset discovery and data collection.

By automating IT infrastructure assessments, you can quickly identify misconfigured assets and prioritize issues for remediation. If a technical asset requires attention that affects your compliance status, such as configuration changes to a non-compliant server or database without the appropriate exceptions, Control Compliance Suite will list the prioritized issue in a remediation report so you can take appropriate action. It even integrates with Symantec ServiceDesk and third-party service desk tools so your helpdesk can be automatically notified when an issue requires their attention.

Procedural controls are also automatically assessed, so you don't need to be an expert on ISO in order to identify compliance gaps. Control Compliance Suite's out-of-the-box support for ISO regulations and standards are translated into questionnaires which can be used to assess the effectiveness of your procedural security controls, evaluate overall employee security awareness, and support security awareness training.

Centrally collect and manage evidence

Control Compliance Suite can combine evidence from multiple sources, including other solutions such as Symantec Data Loss Prevention data or vulnerability management data systems, so you have a complete view of your compliance posture. The evidence that Control Compliance Suite collects is formatted appropriately and mapped to the ISO framework.

Many organizations that need to comply with ISO also have multiple mandates to satisfy such as PCI DSS or SOX. Control Compliance Suite supports over 100+ regulations out-of-the-box, including other ISO frameworks, so you can assess your technical and procedural controls status once and utilize that information to report on multiple mandates without repeating work.

Audit-ready reports and dashboards to understand your security, compliance, and risk posture

Risk-based, dynamic dashboards show your overall ISO compliance status so you can focus on your biggest priorities. If an auditor requests that you create a prioritized response plan, use Control Compliance Suite's risk-ranked results to help determine which risks pose the biggest threats and should be included in your plan. You can also setup role-based viewing for reports and dashboards so users view just the information that is appropriate for them. You can even give auditors access to specific reports while you maintain control over the information that they can access and view.

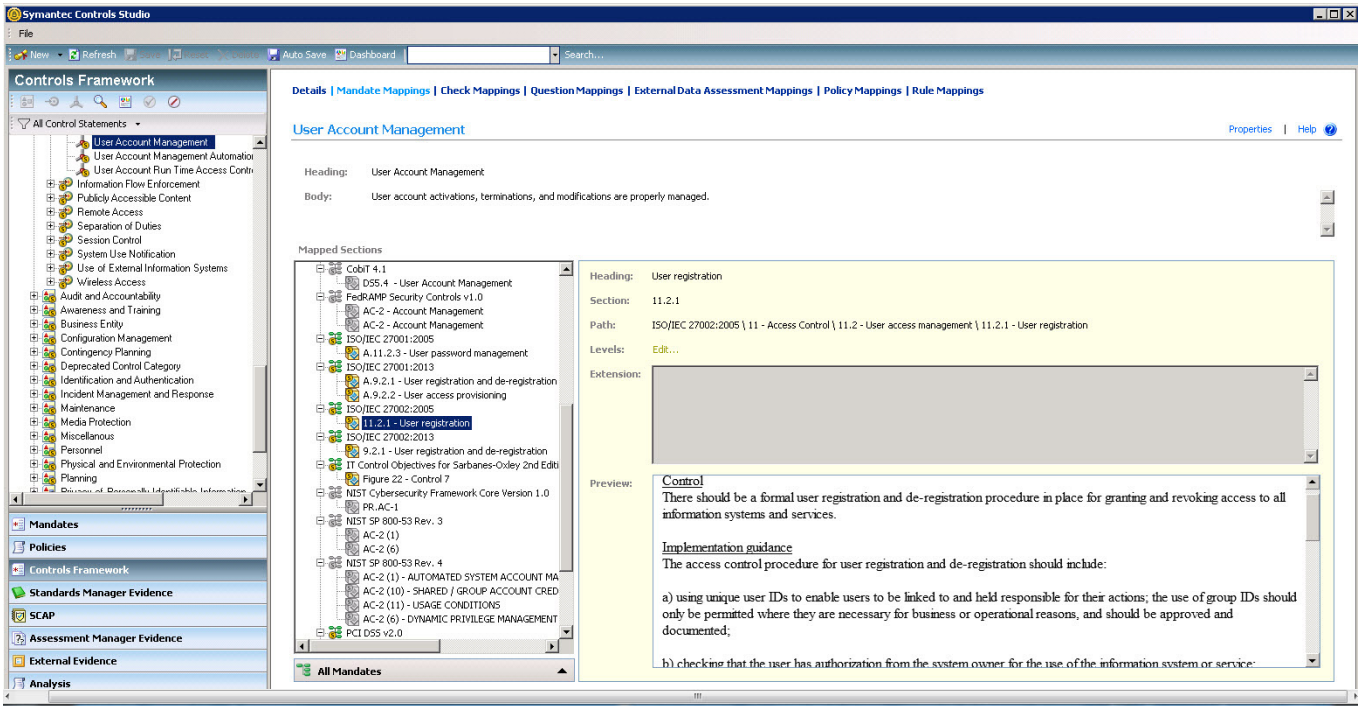


Figure 1: All controls are configurable in Control Compliance Suite and each ISO control statement can be mapped back to specific mandates such as PCI DSS, SOX, and more.

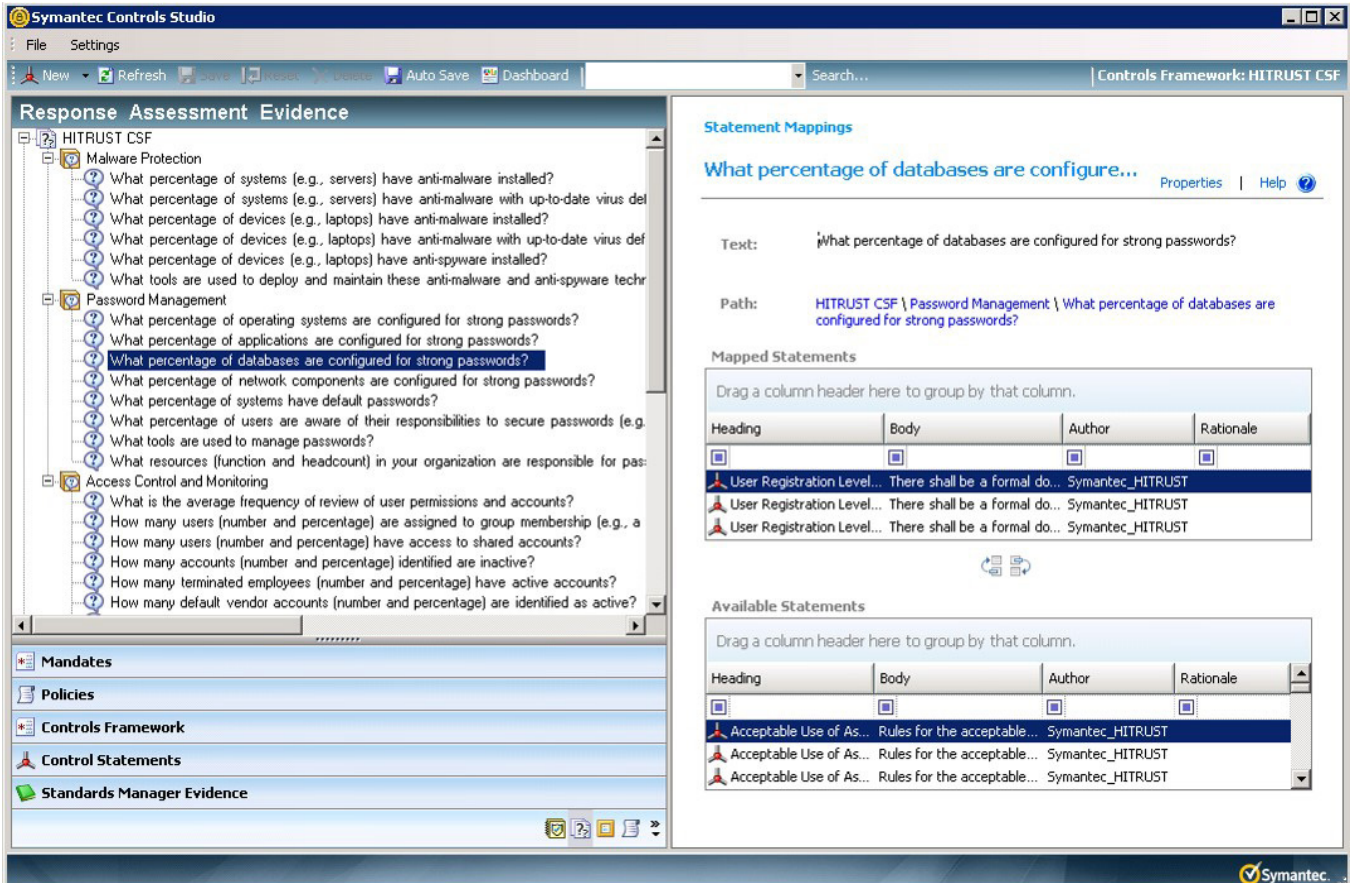


Figure 2: Procedural assessment questions are mapped to controls in Control Compliance Suite.



Figure 3: You can easily assess compliance for multiple mandates and overall compliance for all organizational controls.

Next Steps

Take the next step in learning how Control Compliance Suite can enable your ISO compliance program and give you a unified view of your security controls and vulnerabilities. [Learn More](#)

About Symantec

Symantec Corporation World Headquarters

350 Ellis Street

Mountain View, CA 94043 USA

+1 (650) 527 8000

1 (800) 721 3934

www.symantec.com

12/16 Part #21370381

Symantec Corporation (NASDAQ: SYMC), the world's leading cyber security company, helps businesses, governments and people secure their most important data wherever it lives. Organizations across the world look to Symantec for strategic, integrated solutions to defend against sophisticated attacks across endpoints, cloud and infrastructure. Likewise, a global community of more than 50 million people and families rely on Symantec's Norton suite of products for protection at home and across all of their devices. Symantec operates one of the world's largest civilian cyber intelligence networks, allowing it to see and protect against the most advanced threats. For additional information, please visit www.symantec.com or connect with us on Facebook, Twitter, and LinkedIn.

Copyright © 2016 Symantec Corporation. All rights reserved. Symantec and the Symantec logo are trademarks or registered trademarks of Symantec Corporation or its affiliates in the United States and other countries. Other names may be trademarks of their respective owners.